

# TECHNICAL DATA SHEET



Article reference: HYWFCA2112PL164-120  
Composition: 62% carbon / 38% aramid  
Weave: plain

Description: plain woven hybrid fabric

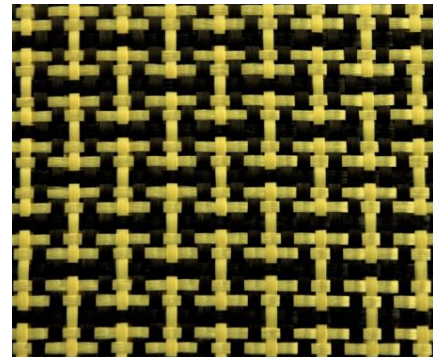
Surface weight: 164 g/m<sup>2</sup> (+/- 4%)  
Weave type: plain 1/1

Fabric construction: Warp: 5,0 ends/cm (+/- 0,1) - (Carbon 3,33; Aramid 1,67)  
Weft: 5,0 picks/cm (+/- 0,1) - (Carbon 1,67; Aramid 3,33)

Yarn type: Warp Carbon Toray 3K 200 Tex + Aramid Twaron 2200 121 Tex (2:1)  
Yarn type: Weft Carbon Toray 3K 200 Tex + Aramid Twaron 2200 121 Tex (1:2)

Fabric thickness: 0,32 mm (+/- 0,05)

Fabric width: 120 cm (+/- 1,0 cm)  
cut selfedges



Remarks: values as indicated by supplier.

Fiber properties:

CARBON: fiber TORAY HS FT300B - 3000 - 40B: 200 Tex

ARAMID: fiber TWARON 2200: 121 Tex

Sizing: 1% compatible with epoxy



Version 01

Date

12-2-2015

Compositesplaza BV -  
Horstlandenpark 2A - 5709MB -  
HELMOND - the Netherlands -  
tel.: 0031-6-46756639 -  
[www.compositesplaza.com](http://www.compositesplaza.com)