

# TECHNICAL DATA SHEET



Article reference: CAWFINPL200-120  
Composition: 100% Carbon Industrial fiber  
Weave: plain

Description: plain woven Carbon fabric  
balanced fabric

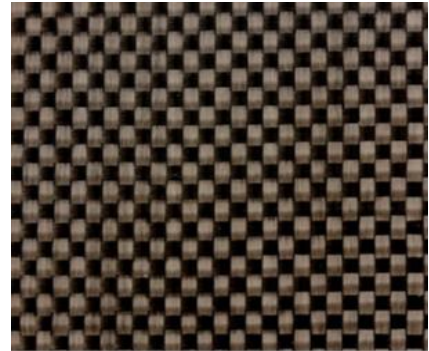
Surface weight: 200 g/m<sup>2</sup> (+/- 4%)  
Weave type: plain 1/1

Fabric construction: Warp: 5,0 ends/cm (+/- 0,1)  
Weft: 5,0 picks/cm (+/- 0,1)

Carbon yarn type: Warp: 3K - Carbon: AKS HS 3K 200 Tex  
Weft: 3K - Carbon: AKS HS 3K 200 Tex

Fabric thickness: 0,32 mm (+/- 0,05)

Fabric width: 120 cm (+/- 1,0 cm)  
cut selfedges



Remarks: values as indicated by supplier.

Carbon Fiber properties: carbon fiber AKS HS 3K 200 Tex A-38 (never twisted)

Tensile strength: 3800 MPa - Tensile Modulus: 240 GPa

Elongation at break: 1,6% - Density 1,78 g/cm<sup>3</sup>

Sizing: 1 - 1,5 % compatible with epoxy and vinylester resin



Version 01

Date

24-2-2015

Compositesplaza BV -  
Horstlandenpark 2A - 5709MB -  
HELMOND - the Netherlands -  
tel.: 0031-6-46756639 -  
[www.compositesplaza.com](http://www.compositesplaza.com)