

TECHNICAL DATA SHEET



Article reference: CAWFINPL160-100
Composition: 100% Carbon Industrial fiber
Weave: plain

Description: plain woven Carbon fabric
balanced fabric

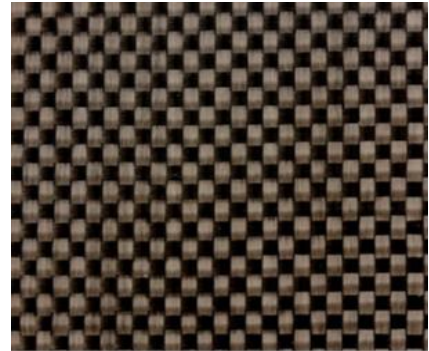
Surface weight: 160 g/m² (+/- 4%)
Weave type: plain 1/1

Fabric construction: Warp: 4,0 ends/cm (+/- 0,1)
Weft: 4,0 picks/cm (+/- 0,1)

Carbon yarn type: Warp: 3K - Carbon: AKS HS 3K 200 Tex
Weft: 3K - Carbon: AKS HS 3K 200 Tex

Fabric thickness: 0,28 mm (+/- 0,05)

Fabric width: 100 cm (+/- 1,5 cm)
cut selfedges



Remarks: values as indicated by supplier.

Carbon Fiber properties: carbon fiber AKS HS 3K 200 Tex A-38 (never twisted)

Tensile strength: 3800 MPa - Tensile Modulus: 240 GPa

Elongation at break: 1,6% - Density 1,78 g/cm³

Sizing: 1 - 1,5 % compatible with epoxy and vinylester resin



Version 01

Date

5-6-2016

Compositesplaza BV -
Horstlandenpark 2A - 5709MB -
HELMOND - the Netherlands -
tel.: 0031-6-46756639 -
www.compositesplaza.com